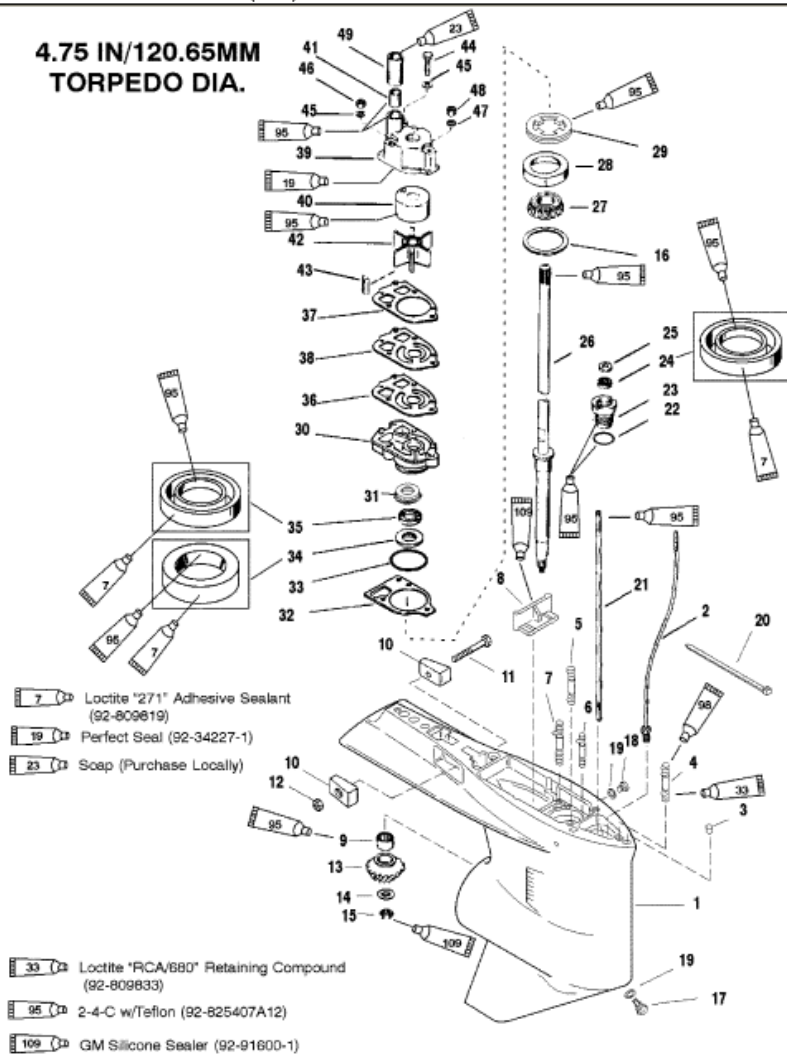


**4.75 IN/120.65MM  
 TORPEDO DIA.**



Parts List						
Ref	Class	Part	Description	Qty	Comment	Footnote
1	1647	9148A93	GEAR HOUSING	1	(BLACK) (BASIC)	
1	1647	9148A94	GEAR HOUSING	1	(GRAY) (BASIC)	
2	22	85822A10	CONNECTOR ASSEMBLY	1		
3	17	43044	DOWEL PIN	2		
4	16	78638	2 STUD (3-1/8 IN.) (LONG)	1		
4	16	18978	3 STUD (3-11/16 IN.) (X-LONG)	1		
5	16	57920	3 STUD (2-1/16 IN.)	2		
6	16	56297	2 STUD (3-3/8 IN.)	1		
7	16	30667	2 STUD (3-1/8 IN.)	2		
8		67891	FILLER BLOCK	1		
9	31	42647A	1 ROLLER BEARING	1		
10		826134	ANODE	2		
11	10	40003	33 SCREW (M6 X 40)	1		
12	11	826833	6 NUT	1		
13		NSS	PINION GEAR (PART OF 43-8281)	1	(1.87:1 - 15 TEETH) (150)	3
13	43	44101	3 PINION GEAR (ALSO PART OF 43-8281)	1	(2:1 - 14 TEETH) (135)	
14	12	92721	WASHER	1		
15	11	35921	NUT	1		
16	15	42637A	1 SHIM SET	AR		6
17	22	67892A	1 SCREW-DRAIN (MAGNETIC)	1		
18	10	79953A	2 SCREW-GREASE FILLER	1		
19	12	19183	2 WASHER	2		10,9
20		56762	1 STA-STRAP	1		
21		78902	1 SHIFT SHAFT	1		
22	25	25439	1 O-RING	1		2,9
23	23	77631A	2 BUSHING ASSEMBLY	1		9
24	26	816464	1 OIL SEAL	1		9
25	12	77674	1 WASHER-RUBBER	1		
26	45	44000	1 DRIVE SHAFT	1	(LONG)	
26	45	44209	1 DRIVE SHAFT	1	(X-LONG)	
27	31	36387A	1 ROLLER BEARING	1		
28		NSS	1 CUP	1		3
29		824519	1 RETAINER	1		
30	46	42579A	3 WATER PUMP BASE	1		
31		NSS	1 RETAINER	1		3
32	27	42631	1 GASKET	1		2,10,9
33	25	90011	1 O-RING	1		2,10,9
34	26	89238	1 OIL SEAL	1		9
35	26	16977	1 OIL SEAL	1		9
36	27	85608	1 GASKET-LOWER	1		2,10,9
37	27	85609	1 GASKET-UPPER	1		2,10,9